

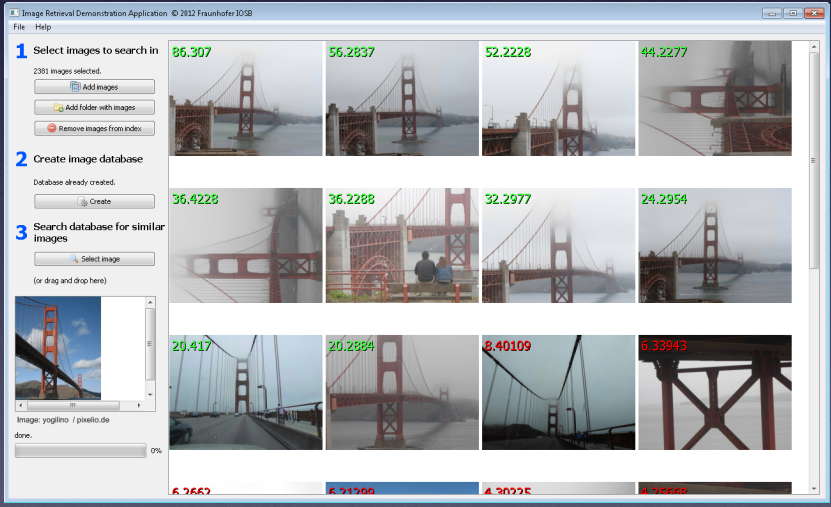
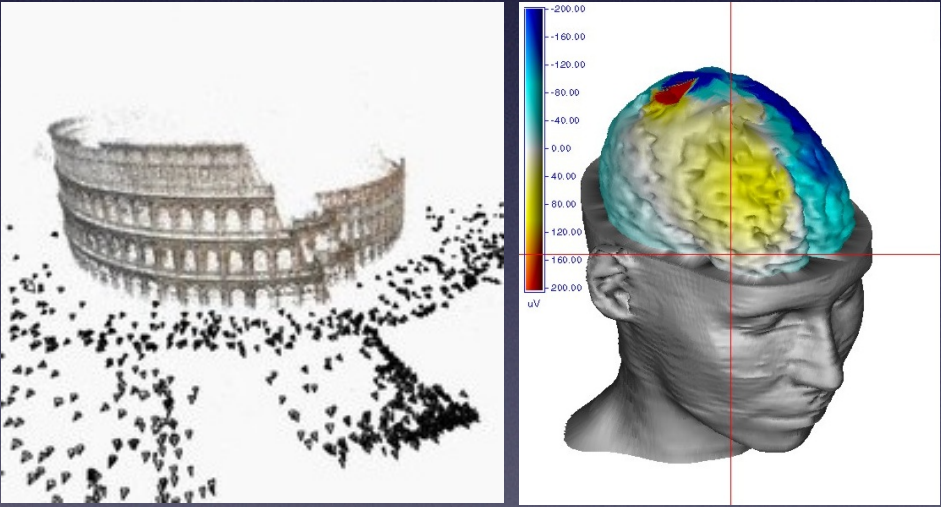
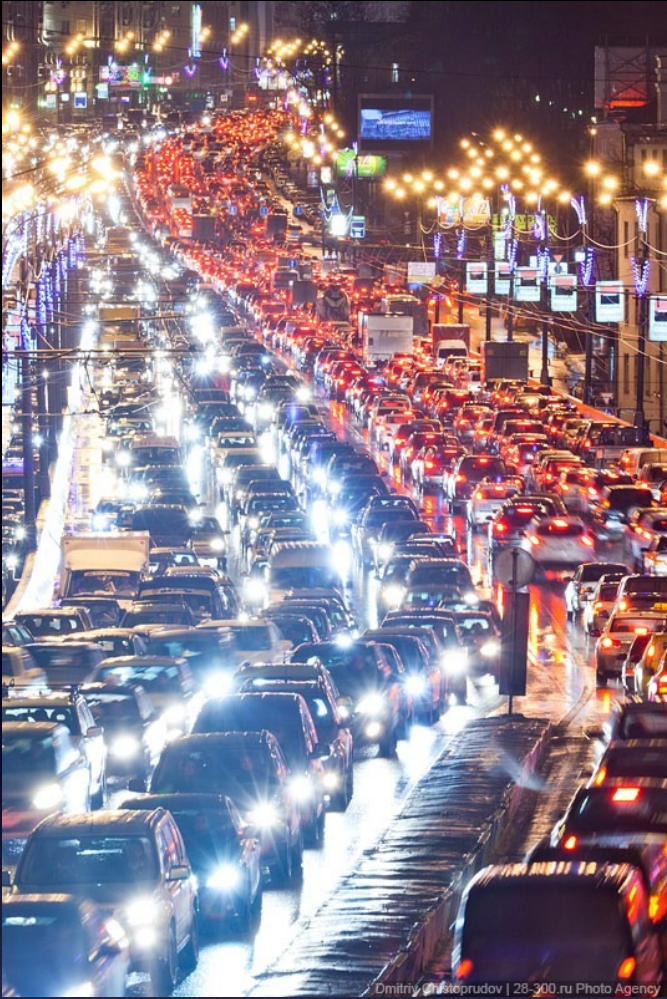
# Statistical Models for Visual Detection and Recognition

COMPSCI 527

Today:

- Course logistics
- Introduction to computer vision and statistical modeling









STUDIO ALF  
FRISORER

MQ DM

UTRO

Sal

SAL

Whitewater

SKO

27

Gjelder ikke  
buss.







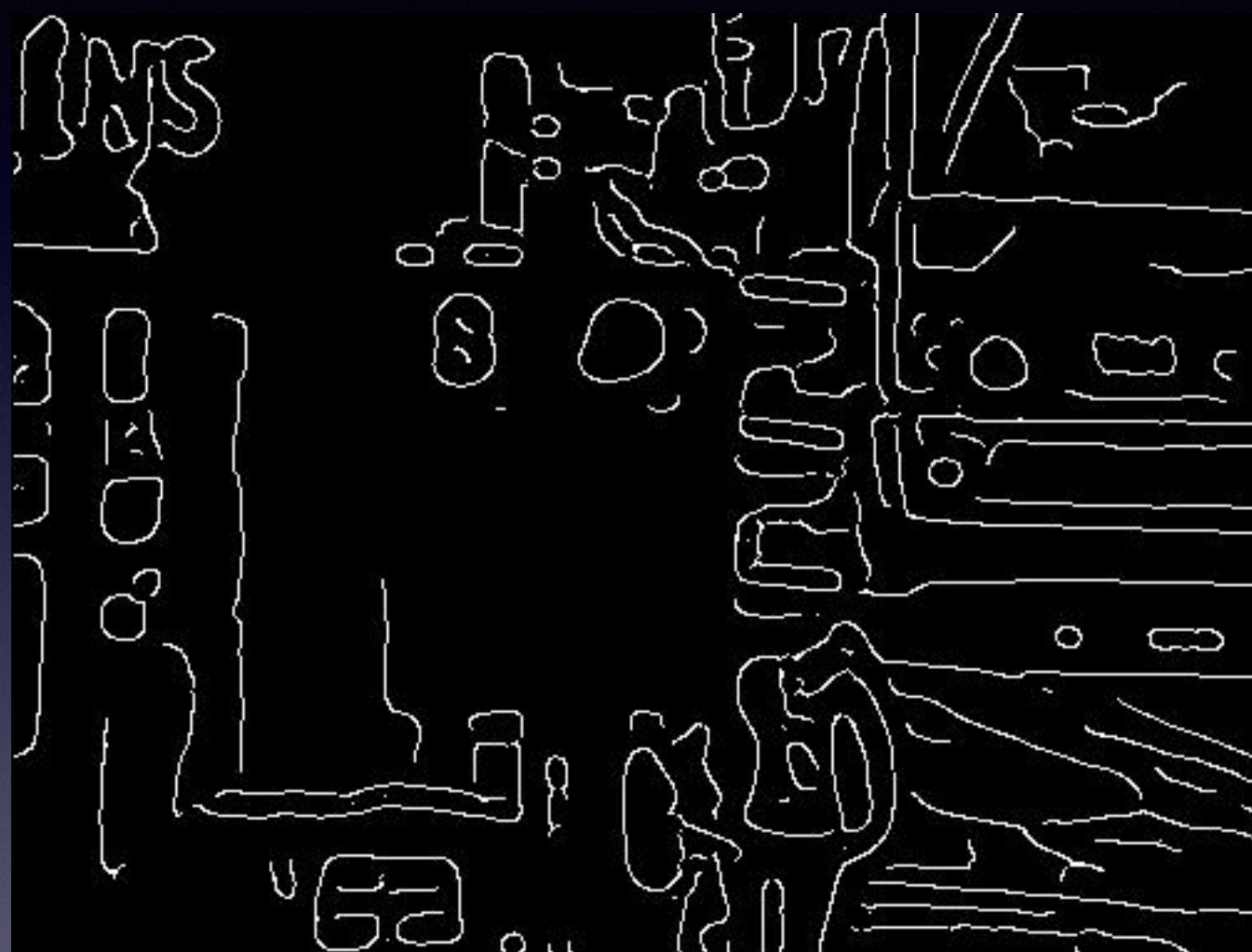






















Photo by Robert Whitman

P I L  
O B O  
L U S



- Reconstruct: Given two or more 2D images of a scene, compute a 3D model of it
- **Detect: Is there one or more instance of x in this image?**
- **Localize: Where are the instances?**
- **Segment: Where are the boundaries of each instance?**
- Track: How is this instance moving from one image to the next?
- **Recognize = classify: What is this?**





models and expectations

